

Venue 13

Lyndale, Rew Rd, TQ13 7EL



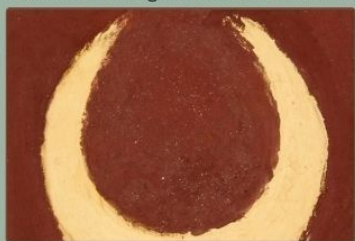
Andrew Stacey

Vibrant shamanic painting; mapping the great wheel of change from a multi award winning artist.



Venue 14

6 Rewlea Cottages, Rew Rd, TQ13 7LE



Cea Blyth

Earth Pigment paintings & prints; using brush, feet & whole body. Sale of early works. www.c-blyth.com



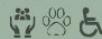
Venue 15

Rowan's, Rew Rd, TQ13 7EJ



Alex Murdin

Dartmoor's granite tors, ancient circles & rows, lichens & moss. Drawings & limited edition prints. www.lithicality.space Insta: @lithicality



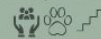
Venue 16

8 Great Bridge Cottages, TQ13 7QW



Jane Bark

Varied Ceramic works exploring textures & form. Making practical objects to fantasy sculptures. Be Curious! Insta: @jane.bark.37



Venue 17

2, Holne Cross, TQ13 7QU



Tati Dennehy

Sculpture in a quirky garden & studio. Celebratory & thoughtful women & Goddesses peek through the undergrowth. www.tatidennehy.com Insta: @tatidennehy



Venue 18

26a North St, TQ13 7QD



Yume Martin

Hand crafted precious jewellery using traditional techniques. Work inspired by nature and original contemporary designs. www.yumejewellery.com Insta: @yumejewellery



Venue 19

Jam Gallery, 18 North St TQ13 7QD



JAM

Original art and prints depicting the beauty of Dartmoor & coastal towns of South Devon. www.madebyjam.co.uk Insta: @thisismadebyjam



Venue 20

Quaker House, Foales Court, TQ13 7QE



Geoff Sellick

Oil & cold wax, colourful paintings inspired by the local Devon landscapes. www.geoffsellickart.com Insta: @geoffsellickart



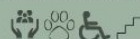
Venue 20

Quaker House, Foales Court, TQ13 7QE



Sarah Richardson

Brightly coloured paintings featuring figurative & semi-abstract landscapes of Dartmoor & rural settings. www.sarahrichardsonart.com Insta: @sarahrichardson_art



Venue 20

Quaker House, Foales Court, TQ13 7QE



Courtney Arnold

Limited edition linocut prints inspired by Dartmoor's wildlife. Insta: @courtney_prints.



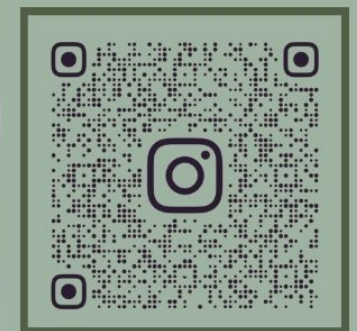
Venue 21

Maisonette, 9 North St, TQ13 7QJ



Flavia Pinto

Unique monotype prints that explore the themes of motherhood, family life and spirituality. Insta: @flaviaprints



@ashburton.artisans

key

- Children welcome
- Dogs welcome
- Wheelchair accessible
- Steps to studio

Please note that these are working studios and are not always suitable for small children due to the nature of the work or venue. Please supervise your children at all times.

If you have any queries please call Sylvie Nicholls on 07880 798793

This Trail is a celebration of Art showcasing the diverse talent of our community. As you explore the trail, coming across unexpected moments of creativity in windows and gardens along the way, you will find yourself immersed in a world of colours, shapes, and stories in various mediums.

From paintings that evoke emotions to sculpture and ceramics that intrigue and jewellery that dazzles, each piece offers a unique perspective and a glimpse into the artist's imagination. Take your time to appreciate each work and let yourself be inspired by the creativity that surrounds you.

Whether you are a seasoned art enthusiast or a curious newcomer, the Arts Trail will have something for everyone.

Opening Hours

Friday: 10-6
Saturday: 10-6
Sunday: 10-6

Please note the Quaker house (Venue 20) is closed on Sunday morning - opening at 1 pm.

